

Assessing The Potential Of Cooperative (Agro)Forestry In Tasmania

Presented by:
Zoya Cheraghi

Contact:
Zoya.cheraghi@utas.edu.au



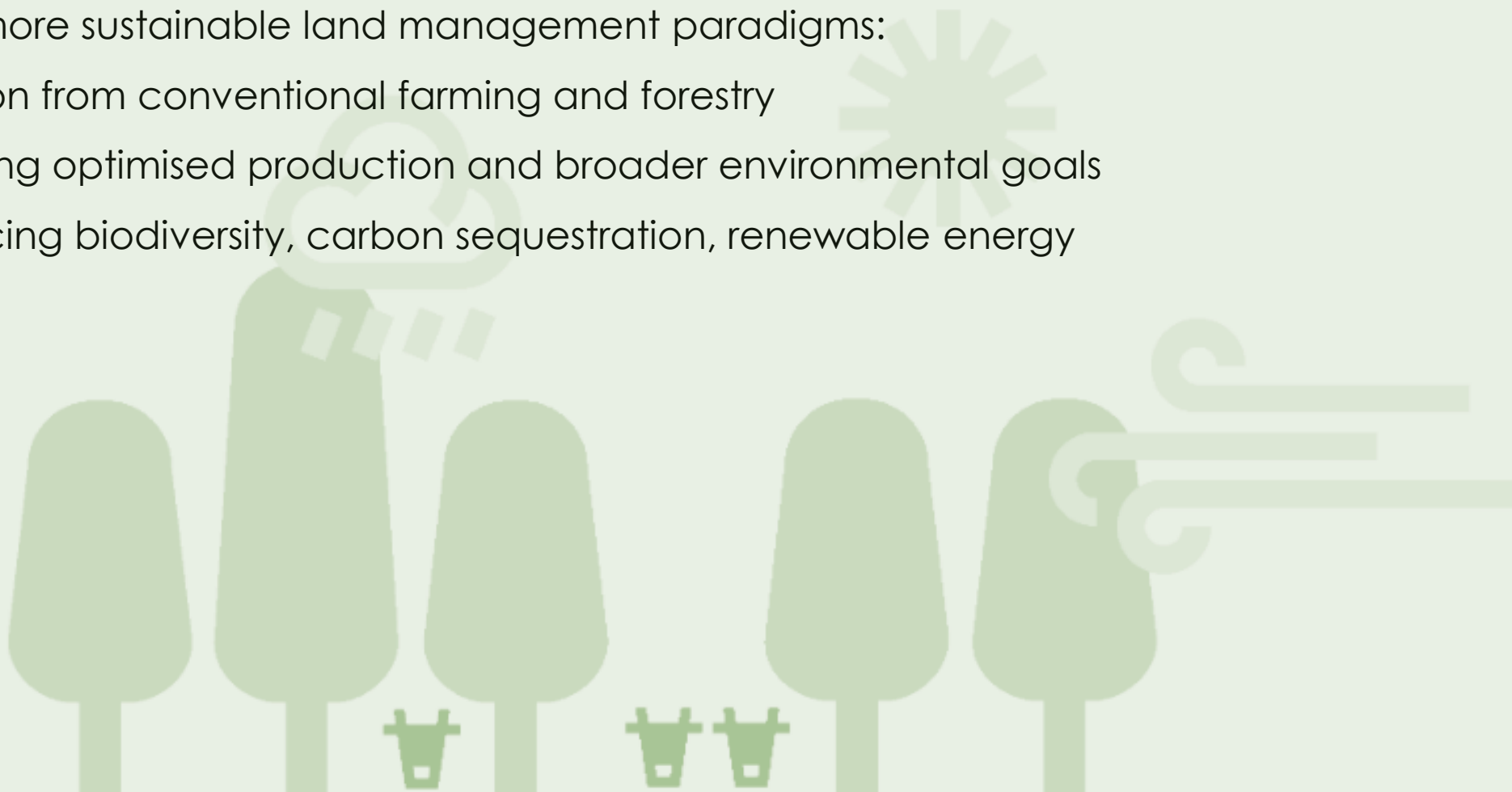
UNIVERSITY of
TASMANIA

Private Forests
Tasmania

Background Information

In response to the growing demand for diverse ecosystem services, there has been a global shift towards more sustainable land management paradigms:

- Transition from conventional farming and forestry
- Prioritising optimised production and broader environmental goals
- Embracing biodiversity, carbon sequestration, renewable energy



Introduction

Small scale landowners encounter challenges that hinder sustainable plantation and optimal operations:

- Lack of economies of scale
- Restricted market information and access
- Difficulties in harnessing technical expertise

A wide-angle photograph of a rural landscape. In the foreground, a lush green field is populated by a flock of sheep, including several adults and many lambs. In the middle ground, a herd of black cows is scattered across the field. The background features a dense line of tall, dark evergreen trees. To the right, a dirt road curves through the field, and an orange excavator is visible near the edge of the frame. The sky is overcast and grey.

A promising theoretical solution for improving efficiency and competitiveness for smallholders is cooperative forestry



Research Questions

What are landowners' primary challenges and motivations face when it comes to tree planting, and which of these challenges might a cooperative be able to address?

What factors influence landowners' decisions to collaborate on tree planting initiatives?

How does addressing identified challenges influence the level of cooperative engagement among landowners in tree planting?

What interventions are the most effective in encouraging landowners to collaborate in (agro)forestry initiatives?

Research Methods

- Qualitative Study:

Goal: Uncover tree plantation challenges & cooperation perspectives

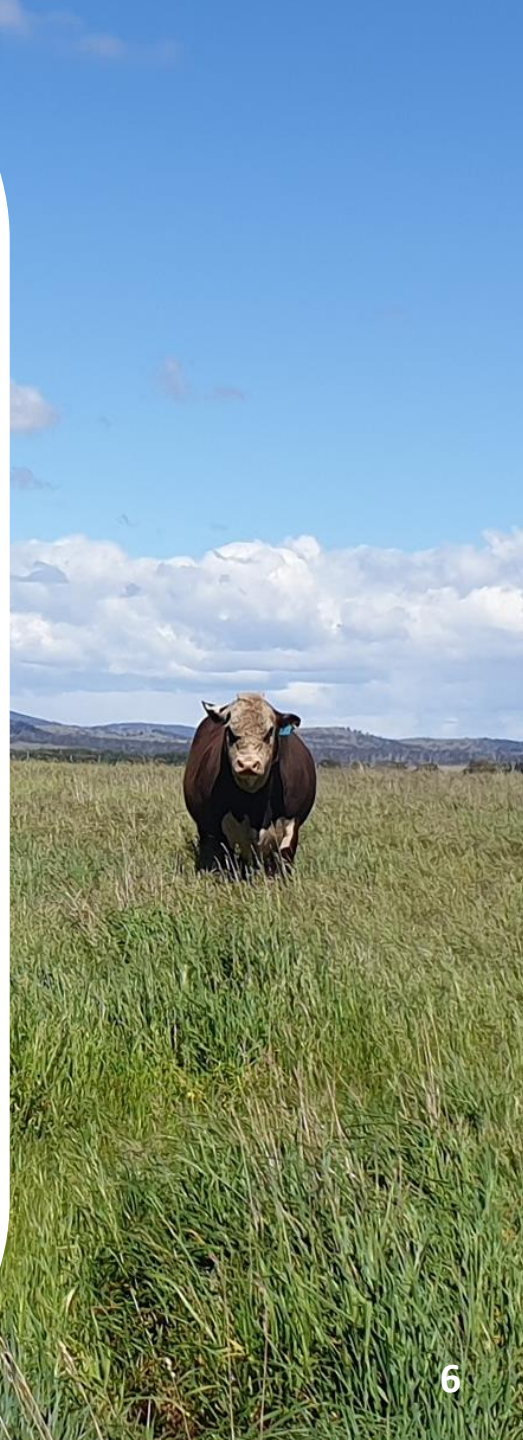
Process: Interviews with Tasmanian farmers

Analysis: Thematic breakdown & report

- Behavioural Experiment:

Validate interviewees' responses

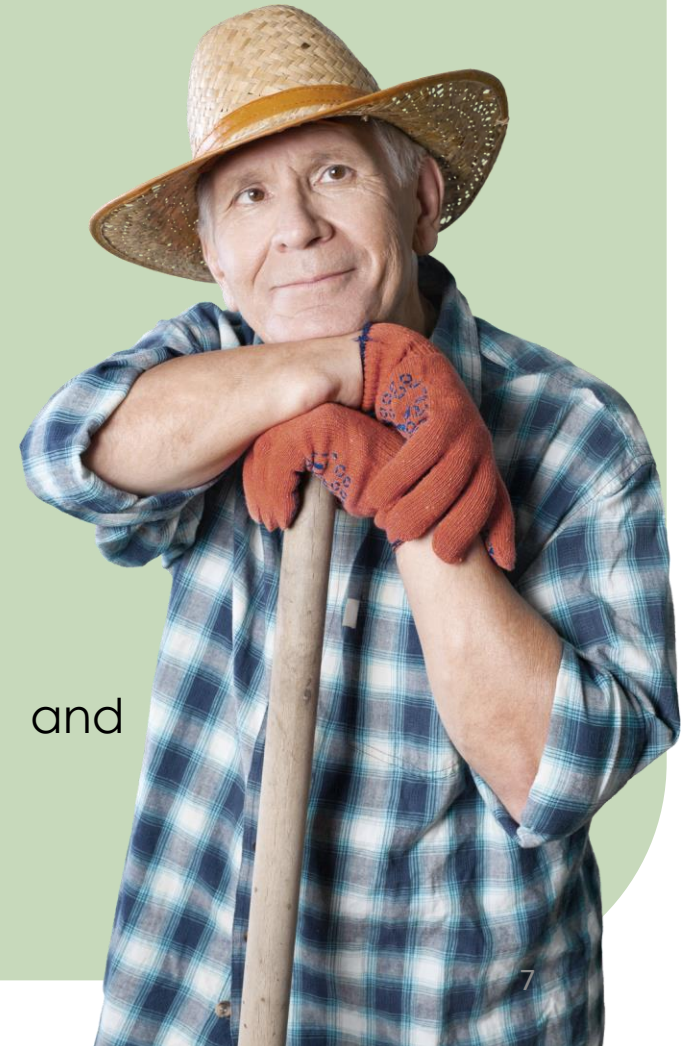
Assess intervention effectiveness



Results From Qualitative Analysis

Participants' perceived benefits of forestry cooperation:

- Gaining better market access
- Negotiating lower harvesting and haulage costs
- Acquiring technical assistance tailored to group needs
- Sharing technical resources such as contractors and machinery
- to improved efficiency
- Pooling and leveraging collective knowledge, information, and experience



Results From Qualitative Analysis

Participants' perceived challenges of cooperative forestry:

- Interpersonal Issues
- Institutional Barriers
- Communication challenges



Challenges of Cooperative Forestry

Interpersonal issues include:

- Navigating trust issues among peers, leaders, or other forestry third parties
- Locating and collaborating with like-minded neighbours
- Managing fears of losing full authority over one's farm
- Balancing between their strong farmer identity with the adoption of forestry practices



Challenges of Cooperative Forestry

Institutional barriers include:

- Unfamiliarity with benefits of cooperation
- Misleading information on tree plantation cooperation
- Cooperation formality dilemmas:

Formal documentation vs. informal arrangements

Inter-group leadership vs. Intra-group leadership



Challenges of Cooperative Forestry

Communication challenges include:

- Difficulties in facilitating effective inter-group & intra-group communication
- Overcoming barriers in establishing clear communication channels between
different farming groups

Next Step: Behavioural Experiment

Interviews suggest three potential interventions to be tested experimentally:

- Does facilitating communication increase the landowners' propensity to cooperate in their tree planting decisions?
- Does providing relevant information increase the landowners' propensity to cooperate in their tree planting decisions?
- Are there specific leadership types that can promote landowners' propensity to cooperate in their tree planting decisions?





Thank You

