

Strategies for healthy and resilient agroforestry landscapes



Rowan Reid

Bambra Agroforestry Farm (family farm)

Australian Master TreeGrower Program (not for profit)


The Otway Agroforestry Network (farmer group)



Thank you for inviting me



My apologies in advance



I (naively) believe
in *family forestry*

Government

Corporate

Family



Family Forestry

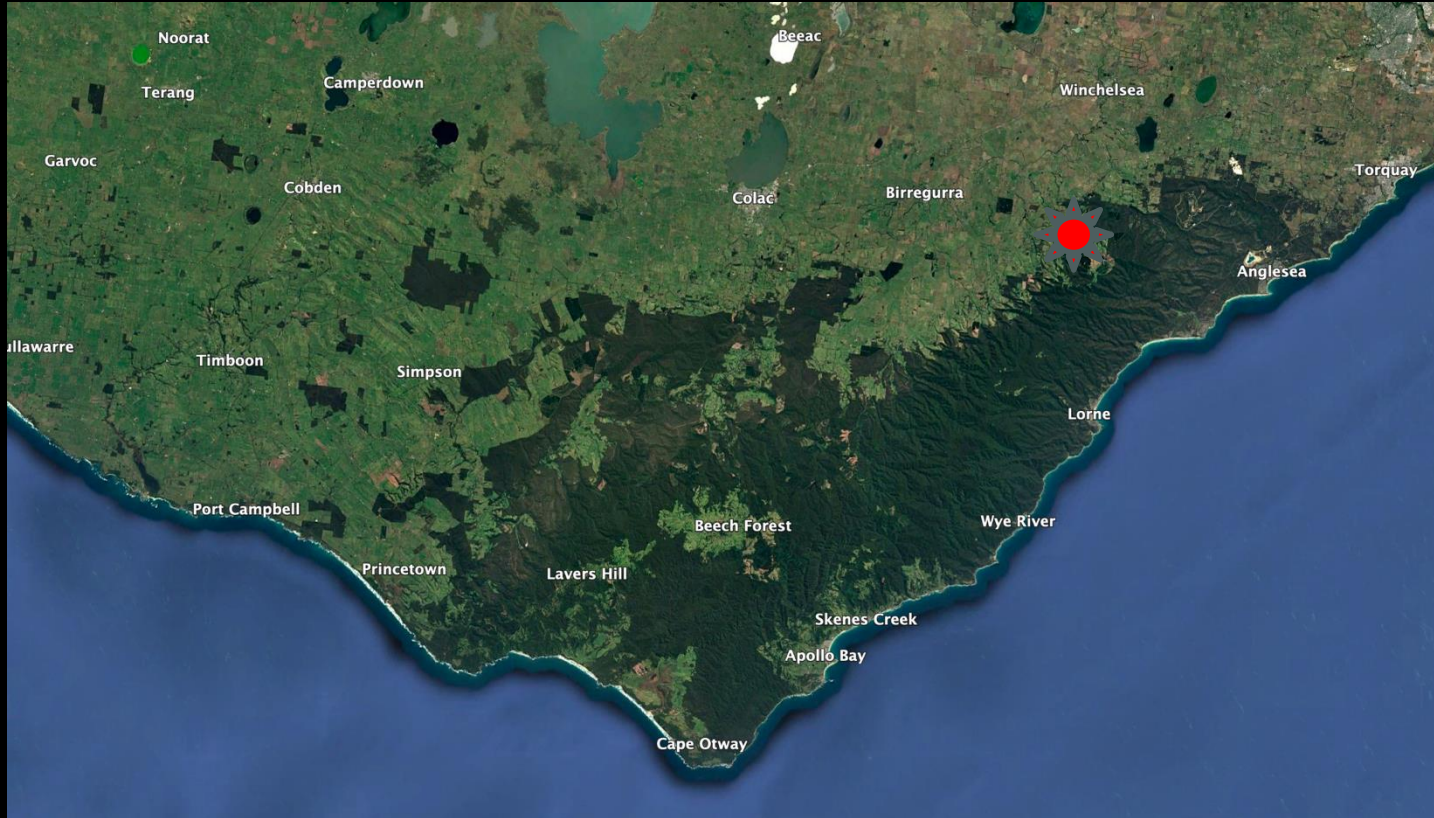
Land that needs trees

The liking to own trees

The time to wait



The Otway Region – Southern Victoria



Bambra Agroforestry Farm

Make *forestry* attractive
to family farmers

This meant changing
forestry (not farmers)

1987



Planted for conservation, shelter and aesthetics



Managed for profit
Just in case



Not a demonstration – an inspiration (I hope)



The game = Active management



The Game



Planting trees is not enough





Clearwood pine



Parklands not Plantations



Solar Kiln timber drying



Frame – Pine, Nitens, Globulus



Mountain Ash
E. Regnans

34-yr-old
90+cm

Parklands not Plantations



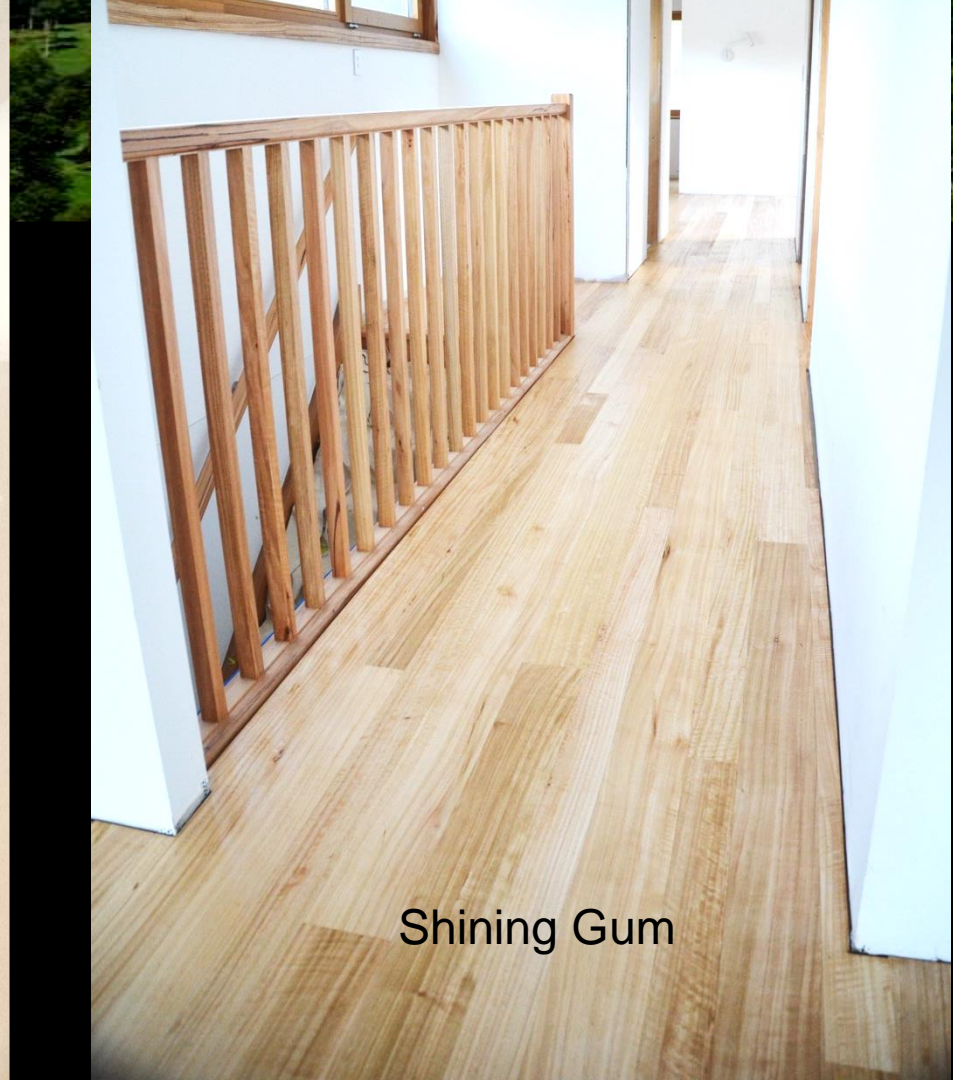
34-yr-old high-pruned Eucalypt







Mountain Ash



Shining Gum



But if only one person does it

If two people do it



But if three families did it – in harmony



Andrew Stewart the farmer



Mike Robinson-Koss the native veg specialist

We formed the Otway Agroforestry Network in 1993

*Farmers growing trees for the reasons
that were important to them*



*Trees for Conservation
and Profit*

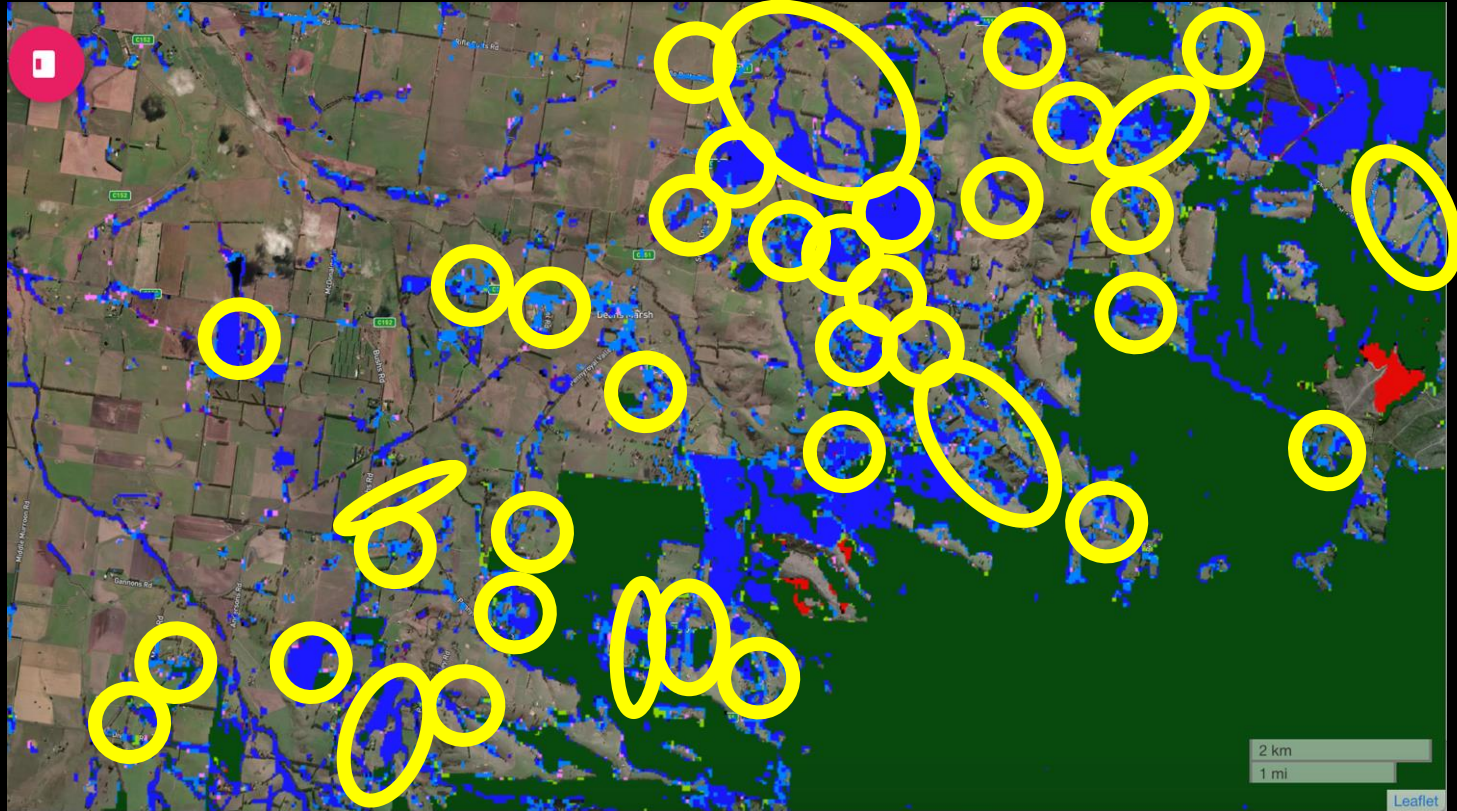


Imagine, 50 families doing it!



They might think it's a movement

Tree cover change since 1993





Spontaneous adoption of multi-purpose forestry on farms

OAN Membership November 2023

Members expiring Oct 2023 or later.

12 views
Last edit was 4 days ago

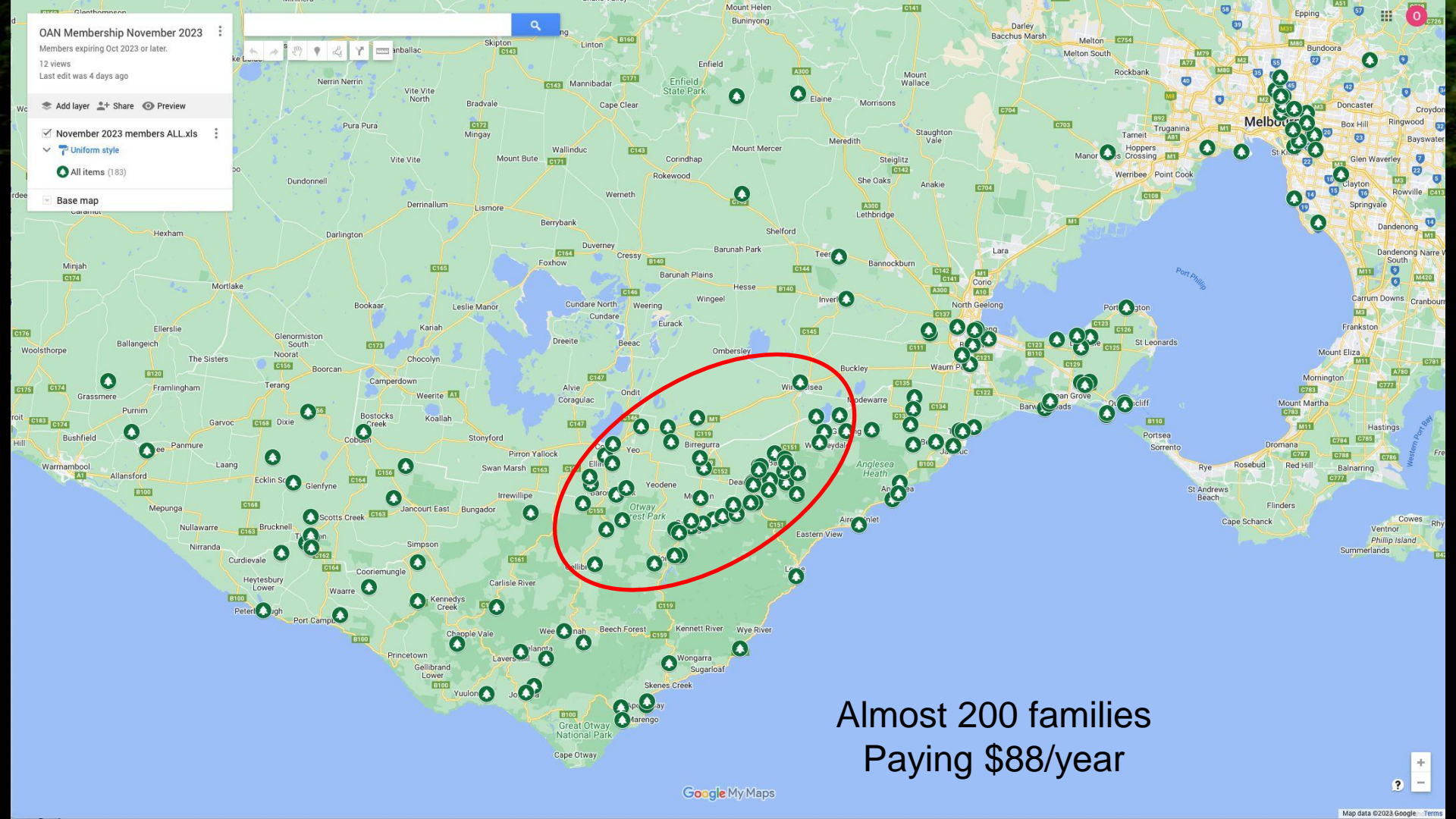
Add layer Share Preview

November 2023 members ALL.xls

Uniform style

All items (183)

Base map



Almost 200 families
Paying \$88/year

Diversity of forest types: size, species, management ...



..... reflecting the inherent
diversity within our community



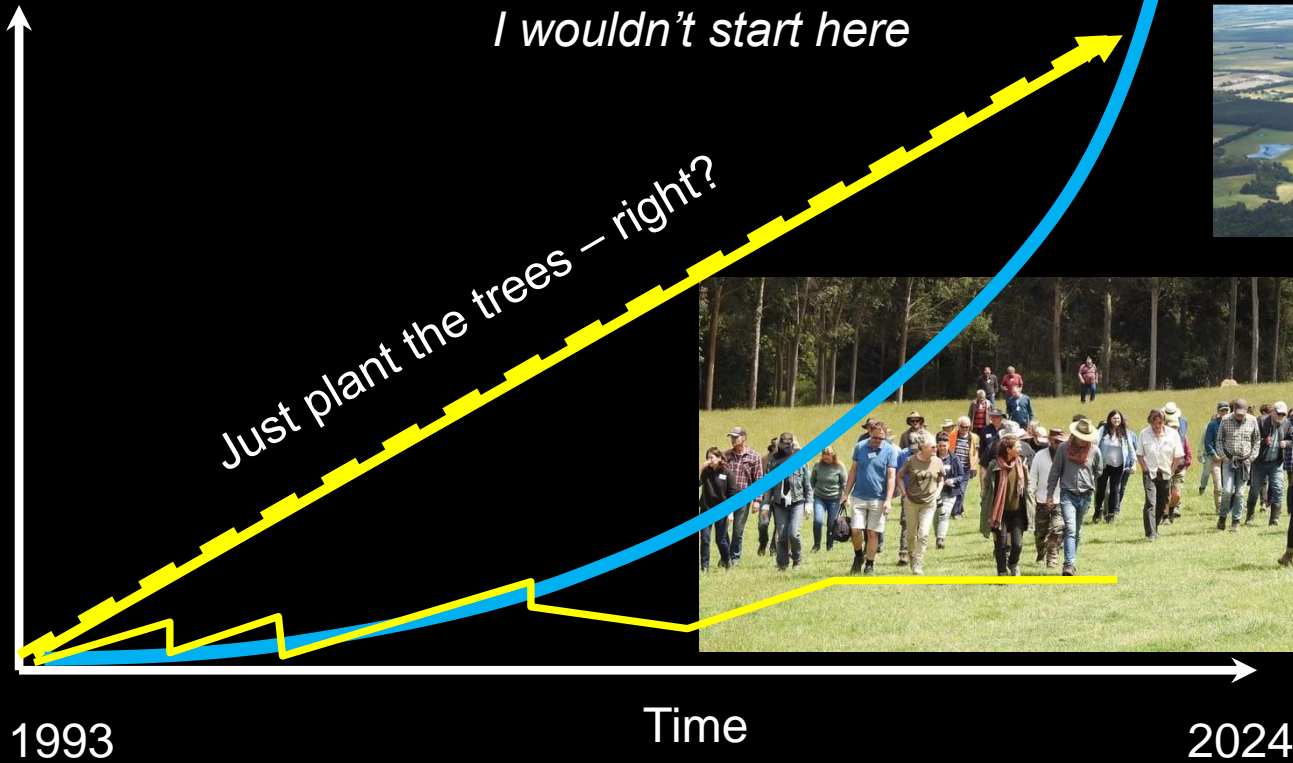
Timber is now an integral part of our landscape

Physically, socially andeconomically



How to get there?

Scale



I wouldn't start here

Just plant the trees - right?



1993

Time

2024

Established a “landholder” group (not a forestry group)



*Trees for Conservation
and Profit*



200 farming families

Run by many farmers who grow trees



Trees for
Conservation
... & Profit

*Farmers making trees
work for them!*

- Landcare group since 1993
- 200 members (\$88)
- \$3M in programs
- No paid “facilitator”

Re-Defined Agroforestry/Farm forestry as anything farmers did with trees



It is their story,
not yours

We didn't focus on a single product (Timber)

Log-Grown Shiitake Mushrooms

AN AUSTRALIAN GROWER'S MANUAL



Parsuram Sharma-Luitl & Rowan Reid
Published by the Otway Agroforestry Network





Started a conversation about trees on farms



We talked amongst ourselves – what did we want?



Talked to government and industry – what did they want?



Focused on supporting farmer decision making



No demonstrations
No \$ for trees and fences





What's wrong with cost-share grants

1. Stifle innovation and adaptation
2. Reduce number of potential recipients
3. Encourage over commitment
4. Rewards mismanagement and neglect
5. Undermine “early adopters”
6. Discourage independent investment
7. Undermine private sector input supply (eg nurseries)
8. Encourage a ‘welfare’ mindset
9. Discourage maintenance
- 10. Undermine participatory initiatives**

Our farmers ARE the Demonstration

What they do provides confidence to others

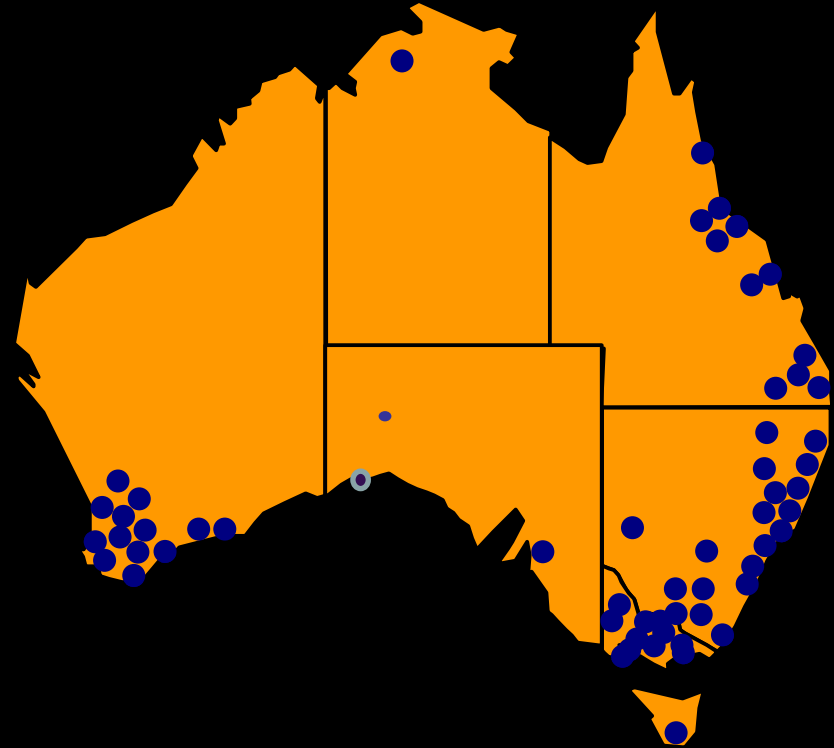


10 local Master TreeGrower courses



We run farmer education courses

130 Courses
>2500 Participants



Like teaching someone to paint



We watched farmers talk
to farmers... about trees



We wanted to invest in that



Peer Group Mentoring

Pay farmers to talk to farmers... about trees



Site Visits - 600 written reports



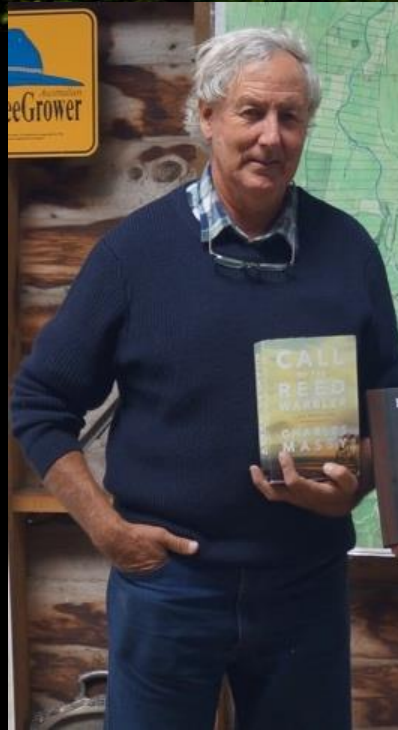
Advocate for farmer-led revegetation



Farmers kept planting (and managing) trees



Charles Massy on the Otway Agroforestry Network



"undoubtedly the most innovative, constantly evolving and forward-looking farmer-driven agroforestry network in the nation" (page 420).



What's next? Proof of concept: landscape change



What's next? Proof of concept: Product quality and supply



The threats



Our forests become so attractive that we can't harvest the wood

Farmers and Local Govt. don't distinguish us from the forestry
they don't want

NEWS

Victorian dairy community warns national food security at risk from timber takeover



By Emily Bissland

ABC South West Vic

Forestry, Logging and Timber Industry

Fri 6 Sep



Jamie Vogels operates a dairy farm opposite a recently harvested blue gum plantation. (ABC News: Emily Bissland)

Publicly funded cost-share grants

- FFORNE
- West RFA Sawlog program
- Plantations for Greenhouse
- Corangamite Farm Forestry project

- Support Plantation Establishment program (\$73M)
- Gippsland Farm Forestry Project (\$1.5M)
- Victorian Carbon Farming Project (\$3M)



Thank You



Heartwood Podcast

#2 The Farmer and the Forester

Rowan Reid Season: 1 Episode: 2



#2 The Farmer and the Forester Heartwood Podcast



00:00:00 | 01:00:43



1x

More Info

Share